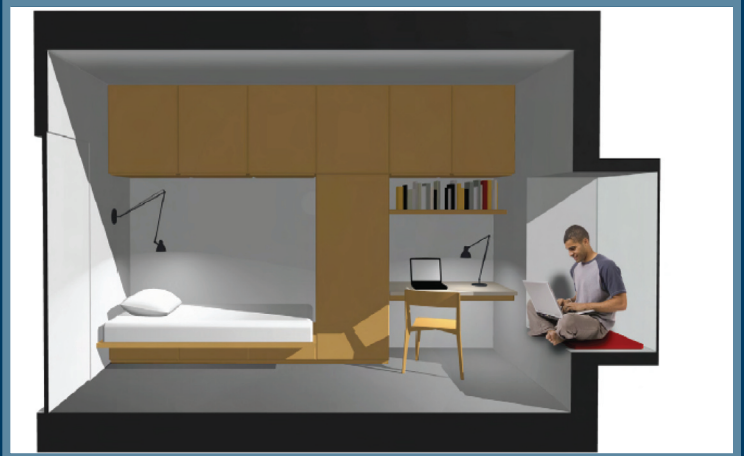
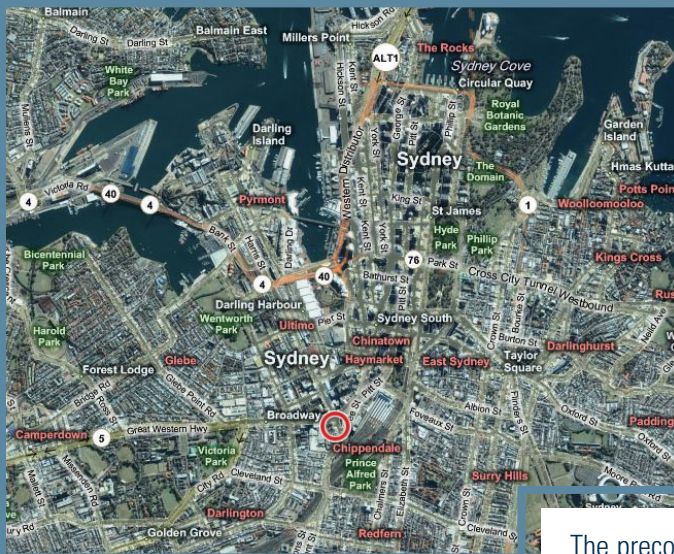
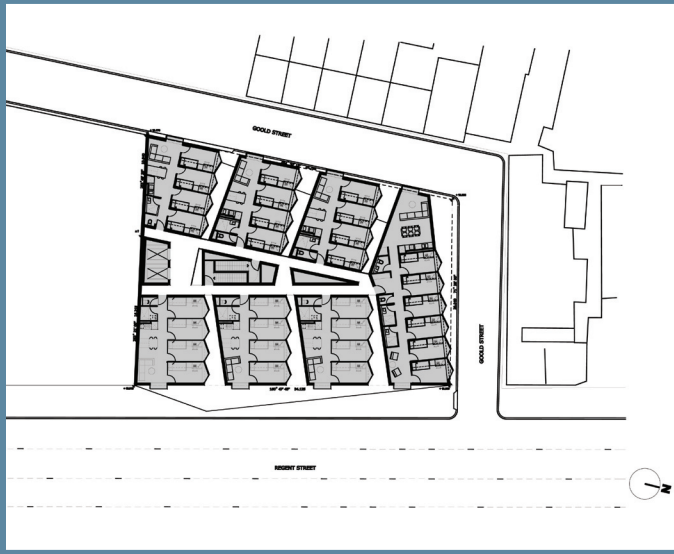


SYDNEY, AUSTRALIA

UNDER CONSTRUCTION



The preconstruction and preliminary design are under way on this 80,000 SF student housing facility in the Chippendale area of Sydney Australia. With over 170 Beds, private rooms for all its residents, a theatre with stadium seating capacity for 200, and a rooftop terrace overlooking the Sydney skyline, this facility is truly on the cutting edge of Student Housing design and function. From site selection to delivery of a furnished facility, TJAC is responsible for all aspects of this development.

- Individual bedrooms per student
- Common living areas in each unit
- Individual Kitchens and bathrooms in each unit
- Stadium seating theatre/lecture hall
- Apartment style residences
- Building wide WiFi